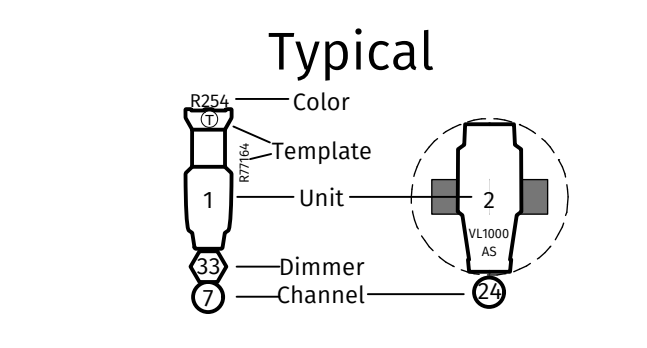


Instrument Legend

Symbol	Instrument Name & Wattage
	Selecon PL4- 50° @ 140w
	ETC Lustr+ 26° @ 140w
	ETC Lustr+ 50° @ 140w
	ETC Source 4- 19° @ 750w
	ETC Source 4- 26° @ 750w
	ETC Source 4- 36° @ 750w
	ETC Source 4- 50° @ 750w
	ETC Source 4- 70° @ 750w
	ETC Source 4 PAR MFL @ 750w
	ETC PARNet @ 750w
	PAR64 MFL @ 1000w



- Notes
- 1) All instruments hung on bottom pipe unless notated otherwise
  - 2) All span pipes hung in bays should be hung on the bottom pipe
  - 3) Final floor mount placement will be decided by the Lighting Designer at focus.
  - 4) No changes shall be made to the plot without the consent of Josh Azoulay.

REV.	REVISION	DATE
A	Rough Rough Plot	2/8/16
B	Rough Plot	2/15/16
C	Final Plot	2/21/16
D	Focus Plot	2/25/16
REV.	REVISION	DATE
REV.	REVISION	DATE
REV.	REVISION	DATE



# Honky

By Greg Kalleres

PRODUCTION STAFF

DIRECTOR	DR. MIKELL PINKNEY
STAGE MANAGER	NICK CHIRIUS
TECHNICAL DIRECTOR	ZAK HERRING
LIGHTING DESIGNER	JOSH AZOULAY
SCENIC DESIGNER	WILLIAM YANNI
COSTUME DESIGNER	DANIELLE DUVEAUX

ELECTRICS STAFF

LIGHTING DESIGNER	JOSH AZOULAY
ASST. LIGHTING DESIGNER	DUNCAN SINGLETON
MASTER ELECTRICIAN	TODD BEDELL
LIGHTING PROGRAMMER	DUNCAN SINGLETON



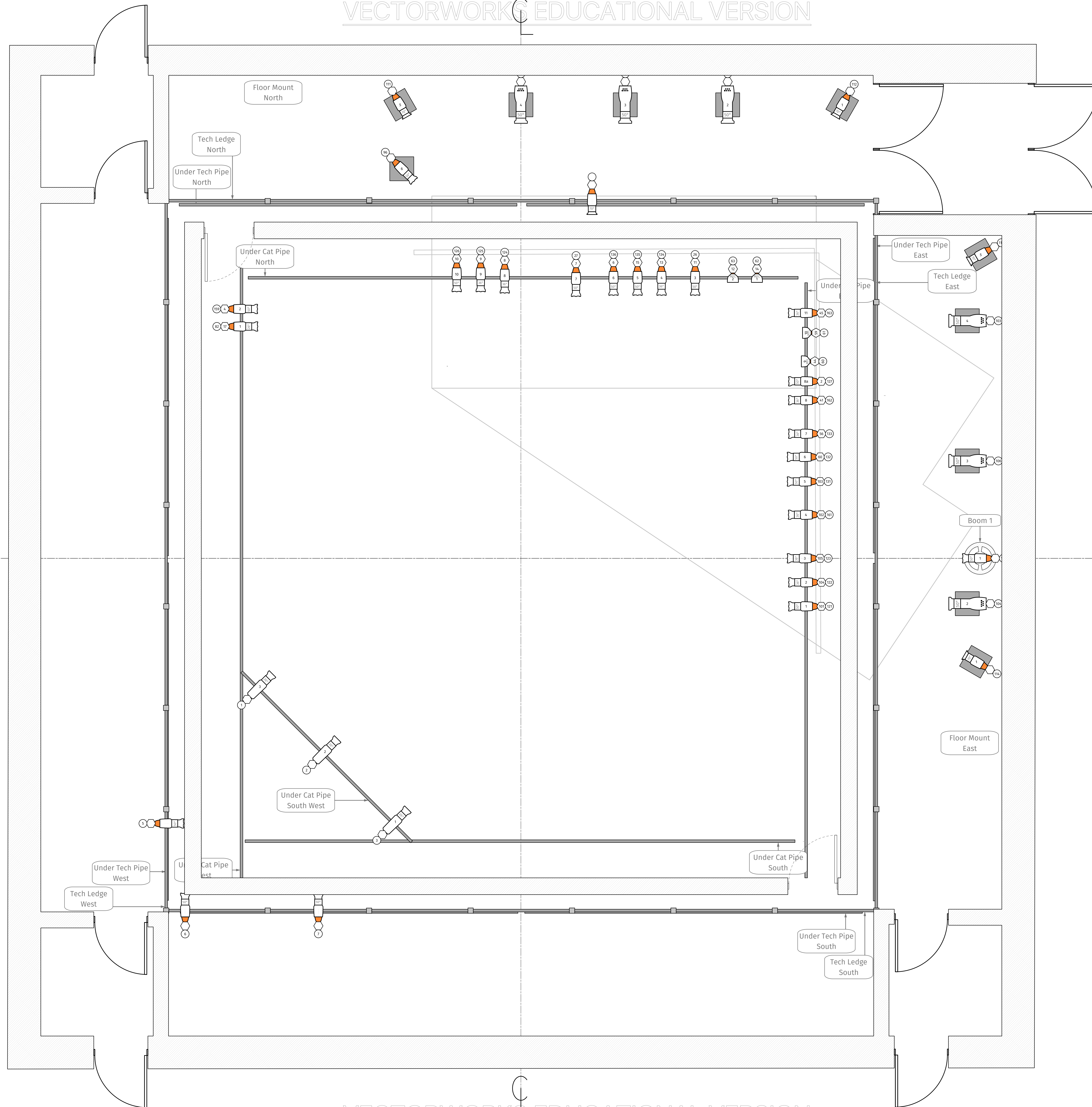
Signature: \_\_\_\_\_

THIS DRAWING AND ALL THE SOCIAL, MANAGEMENT, SCENE AND PLANT PROFILES THEREIN OR REPRESENTED THEREIN ARE OWNED BY AND REMAIN THE PROPERTY OF JOSH AZOULAY AND HAVE BEEN CREATED AND DEVELOPED FOR HIS USE AND IN CONNECTION WITH THIS SPECIFIC PROJECT. WITHOUT THIS DRAWING, NONE OF SUCH SOCIAL, MANAGEMENT, SCENE, OR PLANT DATA BE EMPLOYED BY OR DISCLOSED TO ANY PERSON, FIRM, OR CORPORATION FOR ANY USE OR PURPOSE WHATSOEVER EXCEPT BY THE SPECIFIC AND WRITTEN PERMISSION OF JOSH AZOULAY.

THE IMPLEMENTATION OF THIS LIGHTING DESIGN MUST COMPLY WITH THE MOST STRINGENT APPLICABLE FEDERAL AND LOCAL SAFETY AND FIRE CODES. ALL DRAWINGS, EQUIPMENT LISTS AND THE LIGHT LIST, PERFORM DESIGN REVIEW AND VISUAL CONSULT ONLY. THE LIGHTING DESIGNER IS OBLIGATED TO DETERMINE STRUCTURAL APPROPRIATENESS OF THIS DESIGN AND WILL NOT ASSUME RESPONSIBILITY FOR APPROVED ENGINEERING. THE CONSTRUCTION, HANDLING OR USE OF THE LIGHTING EQUIPMENT WHICH IMPLEMENTS THIS DESIGN.

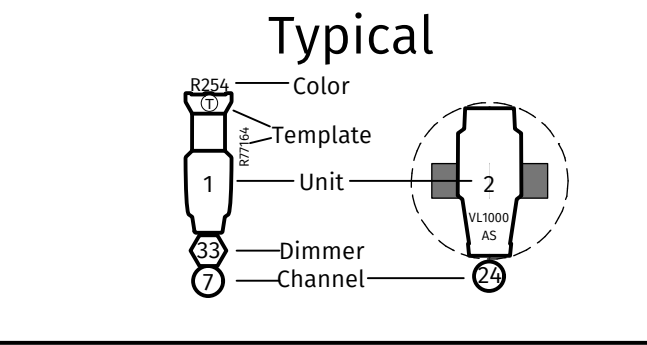
Scale:	1/2"=1'	Plate:	1
Drawn By:	Josh Azoulay		
Date Create:	2/16/16		
Venue:	Black Box		
File Name:	Honky		

# Grid



**Instrument Legend**

Symbol	Instrument Name & Wattage
	Selecon PL4- 50° @ 140w
	ETC Lustr+ 26° @ 140w
	ETC Lustr+ 50° @ 140w
	ETC Source 4- 19° @ 750w
	ETC Source 4- 26° @ 750w
	ETC Source 4- 36° @ 750w
	ETC Source 4- 50° @ 750w
	ETC Source 4- 70° @ 750w
	ETC Source 4 PAR MFL @ 750w
	ETC PARNet @ 750w
	PAR64 MFL @ 1000w



**Notes**

- 1) All instruments hung on bottom pipe unless notated otherwise
- 2) All span pipes hung in bays should be hung on the bottom pipe.
- 3) Final floor mount placement will be decided by the Lighting Designer at focus.
- 4) No changes shall be made to the plot without the consent of Josh Azoulay.

REV.	REVISION	DATE
A	Rough Rough Plot	2/8/16
B	Rough Plot	2/15/16
C	Final Plot	2/21/16
D	Focus Plot	2/25/16
REV.	REVISION	DATE
REV.	REVISION	DATE
REV.	REVISION	DATE



**Honky**  
By Greg Kalleres

**PRODUCTION STAFF**

DIRECTOR.....	DR. MIKELL PINKNEY
STAGE MANAGER.....	NICK CHIRIUS
TECHNICAL DIRECTOR.....	ZAK HERRING
LIGHTING DESIGNER.....	JOSH AZOULAY
SCENIC DESIGNER.....	WILLIAM YANNI
COSTUME DESIGNER.....	DANIELLE DUVEAUX

**ELECTRICS STAFF**

LIGHTING DESIGNER.....	JOSH AZOULAY
ASST. LIGHTING DESIGNER.....	DUNCAN SINGLETON
MASTER ELECTRICIAN.....	TODD BEDELL
LIGHTING PROGRAMMER.....	DUNCAN SINGLETON

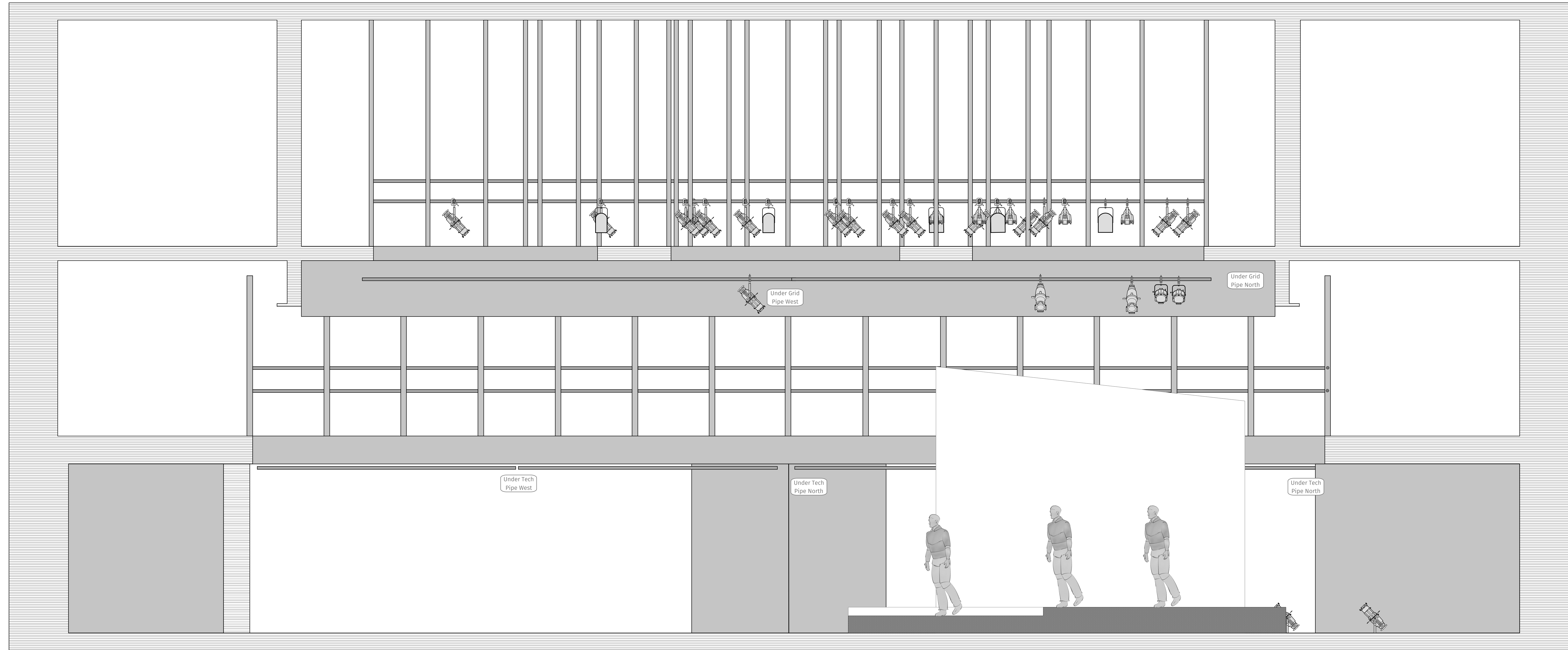


THIS DRAWING AND ALL THE SOCIAL, MANAGEMENT, SCENE AND PLANT INFORMATION HEREIN OR REPRESENTED THEREIN ARE OWNED BY AND REMAIN THE PROPERTY OF JOSH AZOULAY AND HAVE BEEN CREATED AND DEVELOPED FOR HIS OWN AND IN CONNECTION WITH THIS SPECIFIC PROJECT. WITHOUT THIS DRAWING, NONE OF SUCH SOCIAL, MANAGEMENT, SCENE, OR PLANT DATA BE REPRODUCED OR USED IN ANY MANNER, PART OR IN CONNECTION FOR ANY USE OR PURPOSE WHATSOEVER EXCEPT BY THE SPECIFIC AND WRITTEN PERMISSION OF JOSH AZOULAY.

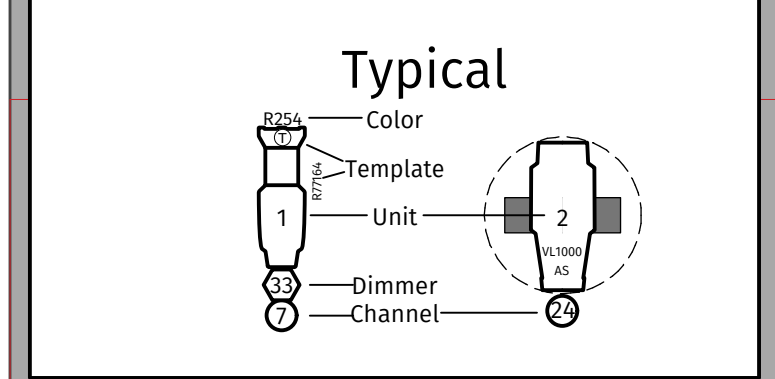
THE IMPLEMENTATION OF THIS LIGHTING DESIGN MUST COMPLY WITH THE MOST STRINGENT APPLICABLE FEDERAL AND LOCAL SAFETY AND FIRE CODES. ALL DRAWINGS, EQUIPMENT LISTS AND THE LIGHT LIST, PERFORM DESIGN REVIEW AND VISUAL CONSULT ONLY. THE LIGHTING DESIGNER IS QUALIFIED TO DETERMINE STRUCTURAL APPROPRIATENESS OF THIS DESIGN AND WILL NOT ASSUME RESPONSIBILITY FOR STRUCTURAL ENGINEERING, CONSTRUCTION, HANDLING OR USE OF THE LIGHTING EQUIPMENT WHICH IMPLEMENTS THIS DESIGN.

Scale:	1/2"=1'	Plate:	2
Drawn By:	Josh Azoulay		
Date Create:	2/15/16		
Venue:	Black Box		
File Name:	Honky		

**Floor**



Symbol	Instrument Name
	Source 4 Section View
	Source 4 Front View
	Source 4 PAR Section View
	Source 4 PAR Front View
	8' Fresnel Section View
	PAR64 Section View



- Notes**
- 1) All instruments hung on bottom pipe unless notated otherwise.
  - 2) All span pipes hung in bays should be hung on the bottom pipe.
  - 3) Final floor mount placement will be decided by the Lighting Designer at focus.
  - 4) No changes shall be made to the plot without the consent of Josh Azoulay.

A	Rough Rough Plot	2/8/16
B	Rough Plot	2/15/16
C	Final Plot	2/21/16
D	Focus Plot	2/25/16
REV.	REVISION	DATE
REV.	REVISION	DATE
REV.	REVISION	DATE
REV.	REVISION	DATE



# Honky

By Greg Kalleres

**PRODUCTION STAFF**

DIRECTOR	DR. MIKELL PINCKNEY
STAGE MANAGER	NICK CHINARDIS
TECHNICAL DIRECTOR	ZAK HEERING
LIGHTING DESIGNER	JOSH AZOULAY
SCENIC DESIGNER	WILLIAM YANNI
COSTUME DESIGNER	DANIELLE DVEVAIX

**ELECTRICS STAFF**

LIGHTING DESIGNER	JOSH AZOULAY
ASST. LIGHTING DESIGNER	DUNCAN SINGLETON
MASTER ELECTRICIAN	TODD REDELL
LIGHTING PROGRAMMER	DUNCAN SINGLETON



Signature: \_\_\_\_\_

THIS DOCUMENT AND ALL THE TECHNICAL INFORMATION HEREON ARE THE PROPERTY OF JOSH AZOULAY AND ARE TO BE USED ONLY FOR THE PROJECT AND NOT TO BE REPRODUCED OR TRANSMITTED IN ANY FORM OR BY ANY MEANS, ELECTRONIC OR MECHANICAL, INCLUDING PHOTOCOPYING, RECORDING, OR BY ANY INFORMATION STORAGE AND RETRIEVAL SYSTEM. ANY UNAUTHORIZED REPRODUCTION OR TRANSMISSION OF THIS DOCUMENT IS STRICTLY PROHIBITED. THE USER OF THIS DOCUMENT AGREES TO HOLD JOSH AZOULAY HARMLESS FROM AND AGAINST ALL CLAIMS, DAMAGES, LOSSES AND EXPENSES, INCLUDING REASONABLE ATTORNEY'S FEES, THAT MAY BE ASSERTED AGAINST HIM AS A RESULT OF HIS USE OF THIS DOCUMENT. THE USER OF THIS DOCUMENT AGREES TO HOLD JOSH AZOULAY HARMLESS FROM AND AGAINST ALL CLAIMS, DAMAGES, LOSSES AND EXPENSES, INCLUDING REASONABLE ATTORNEY'S FEES, THAT MAY BE ASSERTED AGAINST HIM AS A RESULT OF HIS USE OF THIS DOCUMENT.

Scale:	1/2"=1'	Plate:	3
Drawn By:	Josh Azoulay		
Date Create:	2/15/16		
Venue:	Black Box		
File Name:	Honky		

Final